

152 Paturi - spitalizare continua (din care 10 paturi Covid)
10 Paturi - spitalizare de zi

CONSILIUL JUDETEAN BRAILA
SPITALUL DE PNEUMOFIZIOLOGIE
Str. R.S. Campului Nr. 21, Braila, 810003,
Tel: 0239 613 665; Fax: 0239 613 113
www.spitalulbcbdr.ro
epitalbcbdr@yahoo.com

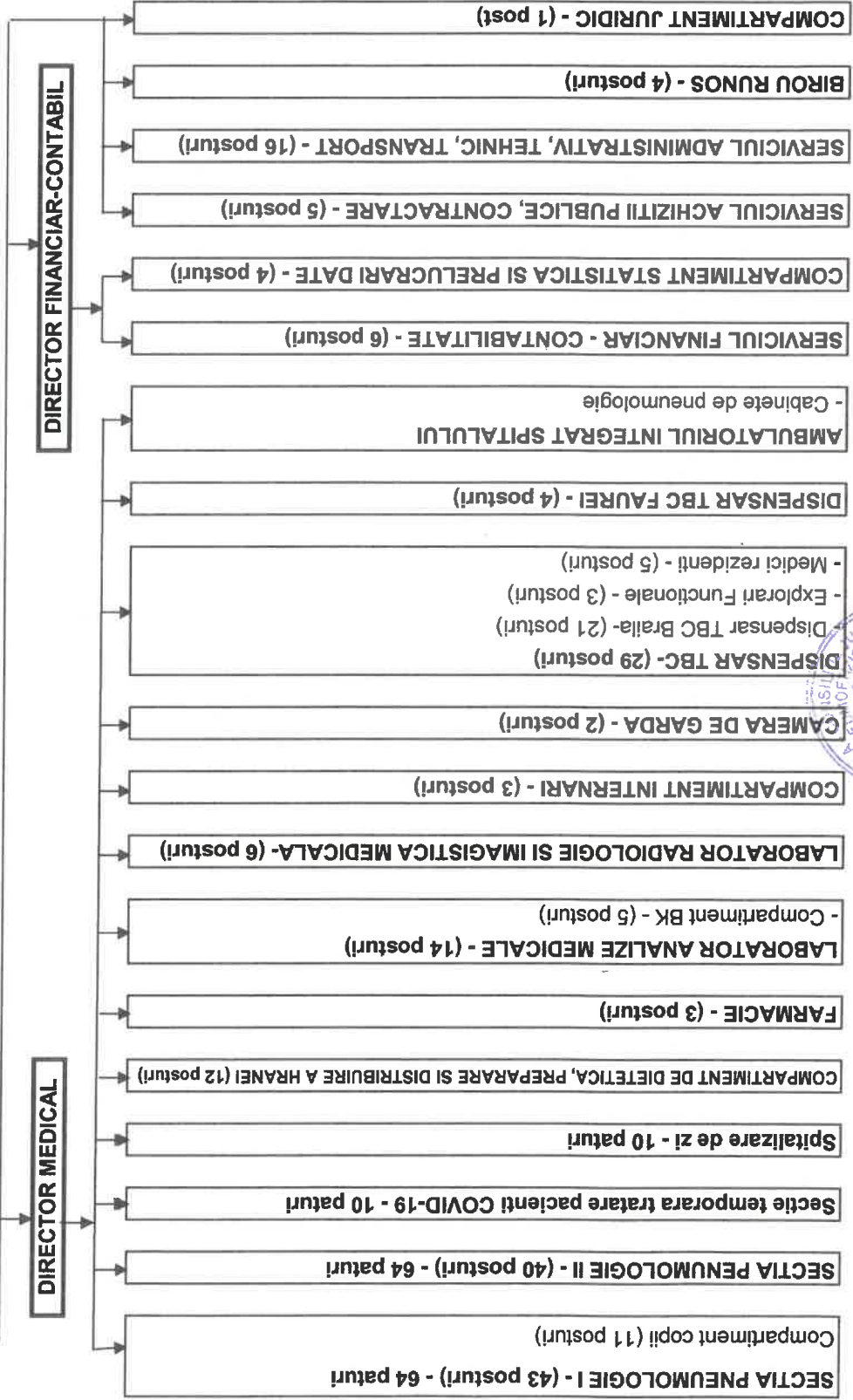
ANMCS
unitate afiliată în
PROCES DE ACREDITARE
CICLUL al II-lea

MANAGER ↔ CONSILIUL DE ADMINISTRATIE

SERVICIUL DE MANAGEMENT AL CALITATII SERVICIILOR DE SANATATE - (6 posturi)

- Compartiment CPIAAM (2 posturi)

*Anexa nr. 1
LA HCY BRAILA
nr. 303 / 2022*



Manager
Ec. Simona Stefan



CONSILIUL JUDETEAN BRAILA
SPITALUL DE PNEUMOFTIZIOLOGIE

Str. R.S. Campiniu Nr. 21, Braila, 810003,
Tel: 0239 613 665; Fax: 0239 613 113
www.spitalultbcbcr.ro
spitaltbcbraila@yahoo.com

ANMCS
unitate aflată în
PROCES DE ACREDITARE
CICLUL al II-lea



Anexa nr. 2 la
HCT BRAILA nr. 308/
2022

152 Paturi- Spitalizare continua
10 Paturi- Spitalizare de zi

STAT DE FUNCTIUNI LA DATA DE 15.11.2022

CONDUCERE				Lege-Cadru 153/2017		
Nr Crt.	Denumirea functiei	Grad profesional	Studii	Grad	Post	Observatii
1	Manager		S	II	1.0	
2	Director financiar-contabil		S	II	1.0	
3	Director medical		S	II	1.0	

Total CONDUCERE 3.0

SECTII MEDICALE SPITAL

SECTIA PNEUMOLOGIE I (64 PATURI)				Lege-Cadru 153/2017		
Nr Crt.	Denumirea functiei	Grad profesional	Studii	Grad	Post	Observatii
4	Sef sectie		S	II	1.0	
5	Medic	Primar	S		1.0	
6	Medic	Primar	S		1.0	
7	Medic	Specialist	S		1.0	Susp. Temporar
8	Asistent sef	Principal	PL		1.0	
9	Asistent medical	Principal	PL		1.0	
10	Asistent medical	Principal	PL		1.0	
11	Asistent medical	Principal	PL		1.0	
12	Asistent medical	Principal	PL		1.0	

13	Asistent medical	Principal	PL		1.0	
14	Asistent medical		PL		1.0	Susp. Temporar
15	Asistent medical	Principal	PL		1.0	
16	Asistent medical	Principal	PL		1.0	Susp. Temporar
17	Asistent medical	Principal	PL		1.0	
18	Asistent medical	Principal	PL		1.0	Susp. Temporar
19	Asistent medical	Principal	PL		1.0	
20	Asistent medical	Principal	PL		1.0	
21	Asistent medical	Principal	S		1.0	
22	Asistent medical	Principal	PL		1.0	
23	Asistent medical	Principal	S		1.0	
24	Asistent medical		PL		1.0	Vacant
25	Infirmiera		G		1.0	
26	Infirmiera		G		1.0	
27	Infirmiera		G		1.0	
28	Infirmiera		G		1.0	
29	Infirmiera		G		1.0	
30	Infirmiera		G		1.0	
31	Infirmiera		G		1.0	
32	Ingrijitoare		G		1.0	
33	Ingrijitoare		G		1.0	
34	Ingrijitoare		G		1.0	
35	Ingrijitoare		G		1.0	Vacant

COMPARTIMENT COPII

36	Medic	Specialist	S		1.0	Medic coord.
37	Asistent medical	Principal	PL		1.0	
38	Asistent medical	Principal	PL		1.0	
39	Asistent medical	Principal	PL		1.0	
40	Asistent medical	Principal	PL		1.0	
41	Asistent medical		PL		1.0	
42	Infirmiera		G		1.0	
43	Infirmiera		G		1.0	
44	Infirmiera		G		1.0	
45	Infirmiera		G		1.0	
46	Infirmiera		G		1.0	

Total SECTIA PNEUMOLOGIE I (64 PATURI)

43.0

SECTIA PNEUMOLOGIE II (64 PATURI)
Lege-Cadru 153/2017

Nr Crt.	Denumirea functiei	Grad profesional	Studii	Grad	Post	Observatii
47	Sef sectie		S	II	1.0	
48	Medic	Specialist	S		1.0	Medic coord. ambulatoriu
49	Medic	Specialist	S		1.0	
50	Medic	Primar	S		1.0	
51	Medic	Primar	S		1.0	Vacant
52	Medic	Primar	S		1.0	Medic coord. Sectie Covid
53	Asistent sef	Principal	PL		1.0	
54	Asistent medical	Principal	S		1.0	
55	Asistent medical	Principal	S		1.0	
56	Asistent medical	Principal	PL		1.0	
57	Asistent medical		PL		1.0	Susp. Temporar
58	Asistent medical	Principal	PL		1.0	
59	Asistent medical	Principal	S		1.0	
60	Asistent medical	Principal	PL		1.0	
61	Asistent medical	Principal	PL		1.0	
62	Asistent medical	Principal	PL		1.0	Asistent coord. Sectie Covid
63	Asistent medical	Principal	PL		1.0	
64	Asistent medical	Principal	PL		1.0	
65	Asistent medical	Principal	PL		1.0	
66	Asistent medical	Principal	PL		1.0	
67	Asistent medical	Principal	PL		1.0	
68	Asistent medical	Principal	PL		1.0	
69	Asistent medical	Principal	PL		1.0	
70	Asistent medical		PL		1.0	
71	Asistent medical		PL		1.0	
72	Asistent medical		PL		1.0	Vacant
73	Infirmiera		G		1.0	
74	Infirmiera		G		1.0	
75	Infirmiera		G		1.0	
76	Infirmiera		G		1.0	
77	Infirmiera		G		1.0	
78	Infirmiera		G		1.0	
79	Infirmiera		G		1.0	
80	Infirmiera		G		1.0	
81	Infirmiera		G		1.0	
82	Infirmiera		G		1.0	
83	Ingrijitoare		G		1.0	
84	Ingrijitoare		G		1.0	
85	Ingrijitoare		G		1.0	
86	Ingrijitoare		G		1.0	Vacant

Total SECTIA PNEUMOLOGIE II (64 PATURI)
40.0

COMPARTIMENT DE DIETETICA, PREPARARE SI DISTRIBUIRE A HRANEI

Nr Crt.	Denumirea functiei	Grad profesional	Studii	Grad	Post	Observatii
87	Asistent medical	Principal	PL		1.0	Asistent coord.
88	Infirmiera		G		1.0	
89	Infirmiera		G		1.0	
90	Infirmiera		G		1.0	
91	Infirmiera		G		1.0	Vacant
92	Infirmiera		G		1.0	Vacant
93	Infirmiera		G		1.0	
94	Muncitor calificat	II	G		1.0	Vacant
95	Muncitor calificat	I	G		1.0	
96	Muncitor calificat	III	G		1.0	
97	Ingrijitoare		G		1.0	
98	Ingrijitoare		G		1.0	Vacant

Total COMPARTIMENT DE DIETETICA, PREPARARE SI DISTRIBUIRE A HRAI 12.0

CAMERA DE GARDA**Lege-Cadru
153/2017**

Nr Crt.	Denumirea functiei	Grad profesional	Studii	Grad	Post	Observatii
99	Asistent medical		PL		1.0	
100	Asistent medical	Principal	PL		1.0	

Total CAMERA DE GARDA 2.0

LABORATOR RADIOLOGIE SI IMAGISTICA MEDICALA**Lege-Cadru
153/2017**

Nr Crt.	Denumirea functiei	Grad profesional	Studii	Grad	Post	Observatii
101	Medic	Primar	S		1.0	Medic coord.
102	Asistent medical	Principal	S		1.0	Asistent coord.
103	Asistent medical	Principal	PL		1.0	
104	Asistent medical	Principal	PL		1.0	
105	Asistent medical	Principal	PL		1.0	
106	Asistent medical				0.5	Vacant
107	Asistent medical		PL		0.5	Vacant

Total LABORATOR RADIOLOGIE SI IMAGISTICA MEDICALA 6.0

FARMACIE**Lege-Cadru
153/2017**

Nr Crt.	Denumirea functiei	Grad profesional	Studii	Grad	Post	Observatii
108	Farmacist sef	Specialist	S		1.0	
109	Asistent medical	Principal	PL		1.0	
110	Asistent medical	Principal	PL		1.0	

Total FARMACIE**3.0****LABORATOR ANALIZE MEDICALE****Lege-Cadru
153/2017**

Nr Crt.	Denumirea functiei	Grad profesional	Studii	Grad	Post	Observatii
111	Sef laborator		S		1.0	Susp. temporar
112	Biolog	Specialist	S		1.0	
113	Biolog	Specialist	S		1.0	
114	Asistent medical	Principal	PL		1.0	
115	Asistent medical	Principal	PL		1.0	
116	Registrator medical		M		1.0	
117	Asistent medical	Principal	PL		1.0	
118	Registrator medical		M		1.0	
119	Ingrijitoare		G		1.0	

COMPARTIMENT BK

120	Biolog	Principal	S		1.0	Biolog coord.
121	Asistent medical	Debutant			1.0	Vacant
122	Asistent medical	Principal	PL		1.0	
123	Asistent medical		PL		1.0	
124	Ingrijitoare		G		1.0	

Total LABORATOR ANALIZE MEDICALE**14.0****COMPARTIMENT STATISTICA SI PRELUCRARI DATE****Lege-Cadru
153/2017**

Nr Crt.	Denumirea functiei	Grad profesional	Studii	Grad	Post	Observatii
125	Asistent medical	Principal	PL		1.0	Asistent coord.
126	Asistent medical	Principal	PL		1.0	
127	Informatician	I	S		1.0	
128	Economist	IA	S		1.0	

Total COMPARTIMENT STATISTICA SI PRELUCRARI DATE**4.0**

SERVICIUL DE MANAGEMENT AL CALITATII SERVICIILOR DE SANATATE

Nr Crt.	Denumirea functiei	Grad profesional	Studii	Grad	Post	Observatii
129	Sef serviciu		S	II	1.0	
130	Referent de specialitate	IA	S		1.0	
131	Economist	IA	S		1.0	Susp. temporar
132	Medic	Primar	S		1.0	Vacant

COMPARTIMENT CPIAAM

Nr Crt.	Denumirea functiei	Grad profesional	Studii	Grad	Post	Observatii
133	Medic	Specialist	S		1.0	Susp. temporar
134	Asistent medical		PL		1.0	

Total SERVICIUL DE MANAGEMENT AL CALITATII SERVICIILOR DE SANATA	6.0
---	------------

COMPARTIMENT INTERNARI

Lege-Cadru 153/2017

Nr Crt.	Denumirea functiei	Grad profesional	Studii	Grad	Post	Observatii
135	Registrator medical		M		1.0	
136	Registrator medical		M		1.0	
137	Registrator medical		M		1.0	

Total COMPARTIMENT INTERNARI	3.0
-------------------------------------	------------

TOTAL SPITAL	136
---------------------	------------

AMBULATORIU INTEGRAT DISPENSAR TBC

DISPENSAR TBC BRAILA

Nr Crt.	Denumirea functiei	Grad profesional	Studii	Lege-Cadru 153/2017		Observatii
				Grad	Post	
138	Asistent medical	Principal	PL		1.0	Asistent coord.
139	Asistent medical	Principal	PL		1.0	
140	Asistent medical	Principal	PL		1.0	
141	Asistent medical	Principal	PL		1.0	
142	Asistent medical	Principal	PL		1.0	
143	Asistent medical	Principal	PL		1.0	
144	Asistent medical	Principal	PL		1.0	
145	Asistent medical	Principal	PL		1.0	
146	Asistent medical	Principal	PL		1.0	
147	Asistent medical	Principal	PL		1.0	
148	Asistent medical		PL		1.0	
149	Asistent medical	Principal	PL		1.0	
150	Asistent medical	Principal	PL		1.0	
151	Statistician medical	Principal	M		1.0	
152	Registrator medical	Principal	M		1.0	
153	Asistent medical	Principal	PL		1.0	
154	Asistent medical	Principal	PL		1.0	
155	Asistent medical	Principal	PL		1.0	
156	Asistent medical		PL		1.0	
157	Ingrijitoare		G		1.0	
158	Ingrijitoare		G		1.0	

Total DISPENSAR TBC BRAILA **21.0**

EXPLORARI FUNCTIONALE

Nr Crt.	Denumirea functiei	Grad profesional	Studii	Lege-Cadru 153/2017		Observatii
				Grad	Post	
159	Asistent medical	Principal	S		1.0	
160	Asistent medical	Principal	PL		1.0	
161	Asistent medical		PL		1.0	

Total EXPLORARI FUNCTIONALE **3.0**

MEDICI REZIDENTI**Lege-Cadru
153/2017**

Nr Crt.	Denumirea functiei	Grad profesional	Studii	Grad	Post	Observatii
162	Medic rezident	Anul III	S		1.0	
163	Medic rezident	Anul I	S		1.0	Susp. temporar
164	Medic rezident	Anul I	S		1.0	
165	Medic rezident	Anul I	S		1.0	
166	Medic rezident	Anul I	S		1.0	Vacant

Total MEDICI REZIDENTI**5.0****DISPENSAR TBC FAUREI****Lege-Cadru
153/2017**

Nr Crt.	Denumirea functiei	Grad profesional	Studii	Grad	Post	Observatii
CABINET TRATAMENTE, FISIER						
167	Asistent medical	Principal	PL		1.0	
168	Ingrijitoare		G		1.0	

CABINET RECOLTARE SPUTA

169	Asistent medical	Principal	PL		1.0	
170	Registrator medical	Principal	M		1.0	

CABINET ASISTENTE DE TEREN**Total DISPENSAR TBC FAUREI****4.0****TOTAL DISPENSAR TBC****33.0****TOTAL SECTII MEDICALE****169.0****APARAT FUNCTIONAL****SERVICIUL FINANCIAR-CONTABILITATE****Lege-Cadru
153/2017**

Nr Crt.	Denumirea functiei	Grad profesional	Studii	Grad	Post	Observatii
171	Sef serviciu		S	II	1.0	
172	Economist	IA	S		1.0	Susp. temporar
173	Economist	IA	S		1.0	
174	Economist	IA	S		1.0	
175	Economist	IA	S		1.0	
176	Registrator medical		M		1.0	

Total SERVICIUL FINANCIAR-CONTABILITATE**6.0**

SERVICIU ACHIZITII PUBLICE, CONTRACTARE**Lege-Cadru
153/2017**

Nr Crt.	Denumirea functiei	Grad profesional	Studii	Grad	Post	Observatii
177	Sef serviciu		S	II	1.0	
178	Economist	IA	S		1.0	
179	Operator date	II	M		1.0	
180	Muncitor calificat	IV	G		1.0	
181	Muncitor calificat	I	G		1.0	

Total SERVICIU ACHIZITII PUBLICE, CONTRACTARE**5.0****SERVICIU ADMINISTRATIV, TEHNIC, TRANSPORT****Lege-Cadru
153/2017**

Nr Crt.	Denumirea functiei	Grad profesional	Studii	Grad	Post	Observatii
182	Sef serviciu		S	II	1.0	
183	Muncitor calificat	IV	G		1.0	
184	Muncitor calificat	I	G		1.0	
185	Muncitor calificat	IV	G		1.0	Vacant
186	Muncitor calificat	I	G		1.0	
187	Muncitor calificat	IV	G		1.0	
188	Muncitor calificat	IV	G		1.0	
189	Muncitor calificat	I	G		1.0	
190	Muncitor calificat	IV	G		1.0	Vacant
191	Muncitor calificat	IV	G		1.0	
192	Muncitor calificat	IV	G		1.0	
193	Spalatoreasa		G		1.0	
194	Spalatoreasa		G		1.0	
195	Spalatoreasa		G		1.0	
196	Spalatoreasa		G		1.0	
197	Ingrijitoare		G		1.0	

Total SERVICIU ADMINISTRATIV, TEHNIC, TRANSPORT**16.0**

BIROU RUNOS**Lege-Cadru
153/2017**

Nr Crt.	Denumirea functiei	Grad profesional	Studii	Grad	Post	Observatii
198	Sef Birou		S	II	1.0	
199	Referent de specialitate	I	S		1.0	Vacant
200	Psiholog	Practicant	S		1.0	
201	Referent	Debutant	M		1.0	Vacant

Total BIROU RUNOS 4.0**COMPARTIMENT JURIDIC****Lege-Cadru
153/2017**

Nr Crt.	Denumirea functiei	Grad profesional	Studii	Grad	Post	Observatii
202	Consilier juridic	IA	S		1.0	

Total COMPARTIMENT JURIDIC 1.0**TOTAL SERVICII AUXILIARE** 32.0**TOTAL GENERAL** 201

Manager,
Ec. Sîmpetru Stefan



Intocmit,
Birou Runos,
Sef birou Malinche Diana